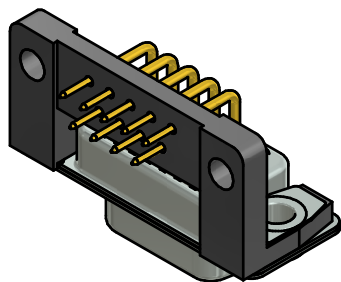
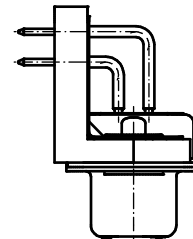
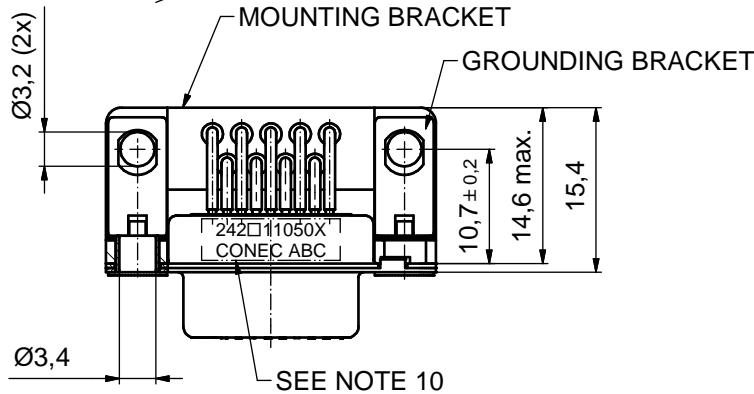
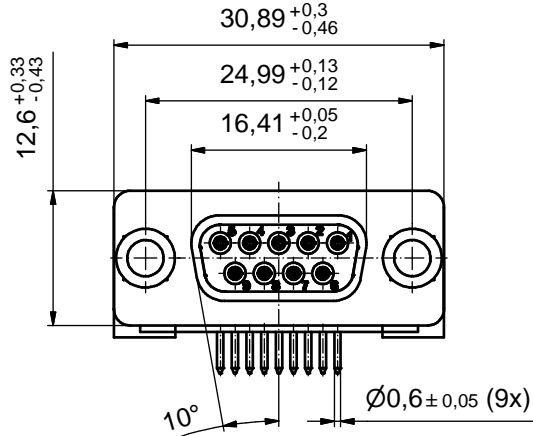
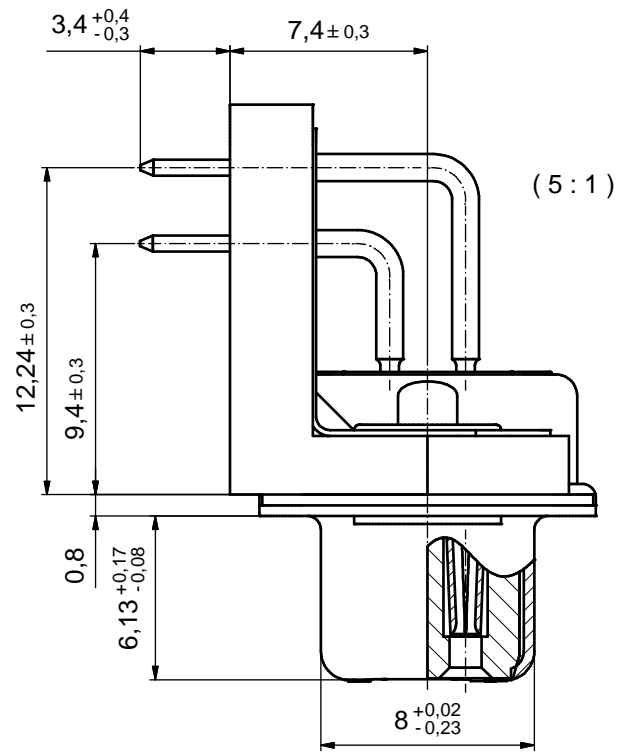
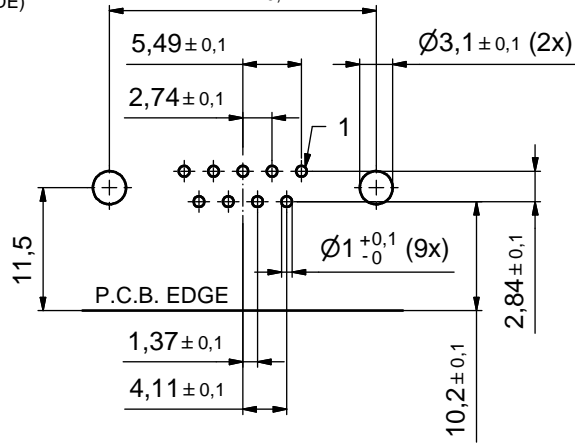


P.C.B. HOLE DRILLINGS 24,99^{+0,13}_{-0,12}
(P.C.B. TOP SIDE)



NOTES:

1. FOR WAVESOLDERING (SOLDER BATH TEMPERATURE 260°C FOR 5 SEC AND SOLDER PREHEAT 100°C FOR 30 SEC.)
2. METALSHELLS: STEEL; min. 315µin TIN over 40-80µin NICKEL
3. INSULATOR: HIGH TEMPERATURE PLASTIC UL 94 V-0, BLACK
4. CONTACTS: COPPER ALLOY; PLATING (SEE PART NO.):
 - PLEASE ADD A for GOLD FLASH over NICKEL (PREFERRED TYPE)
 - PLEASE ADD B for 20µin HARD GOLD over min. 50µin NICKEL
 - PLEASE ADD C for 30µin HARD GOLD over min. 50µin NICKEL
- CONTACT TAILS PRETINNED
5. MOUNTING BRACKET: HIGH TEMPERATURE PLASTIC UL 94 V-0; BLACK
6. RIVETED INSERTS: COPPER ALLOY; min. 200µin TIN over 80µin NICKEL
7. GROUNDING BRACKETS: COPPER ALLOY; TIN PLATED
8. CAPACITANCE: 830pF ± 20%
9. DIELECTRIC WITHSTANDING VOLTAGE: 424 VDC
10. CONNECTOR IS PART MARKED: 242□11050X CONEC ABC (see note 4)

Directive 2002/95/EC RoHS compliant

THIS DRAWING MAY NOT BE COPIED OR REPRODUCED IN ANY WAY, AND MAY NOT BE PASSED ON TO A THIRD PARTY WITHOUT WRITTEN PERMISSION. OWNERSHIP AND COPYRIGHT OF CONEC GmbH DO NOT ALTER CAD DRAWING BY HAND	tolerance		dim. in mm		scale: 2:1 (5:1)	
					material: see notes	
			date		title:	
			name		D-SUB FILTER FEMALE 90°	
			drawn 22.10.14 Henneboel		9pos. SOLDER PIN ANGLED 0.370inch	
			appd. 22.10.14 Lehmenkühler		through hole, mounting bracket, grounding clip	
			norm		dwg no:	
			d-old 24K11V5A		DIN-A3	
	3 x b A5398 22.10.2014 K.H.		CONEC®		sh: 1	
	a Original				part no: (b) 24K1A1560	
rev. description date name				part no: (b) 242□11050X (see note 4)		