

6

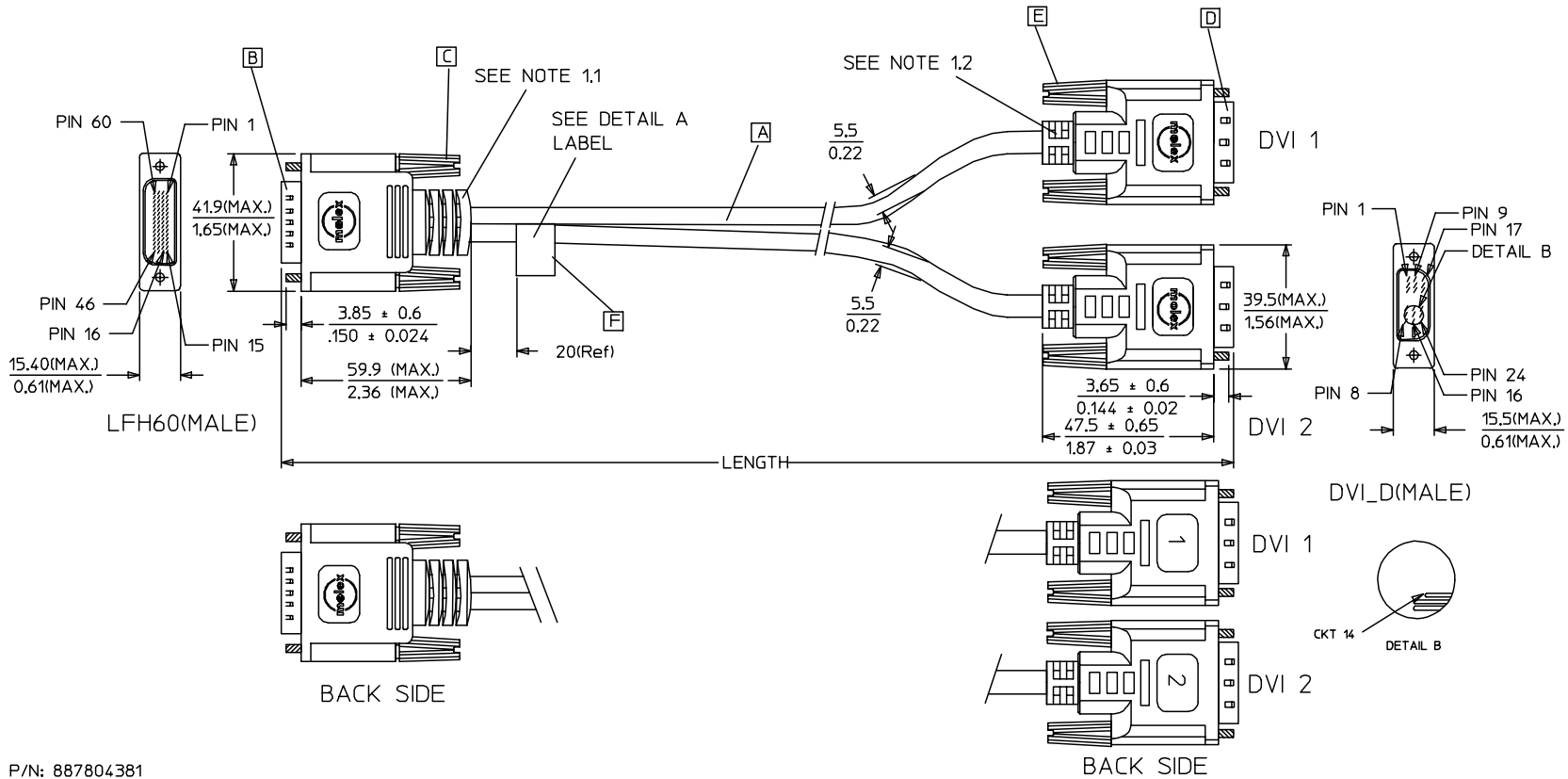
5

4

3

2

1



P/N: 887804381

MOLEX P/N:
887-6676-XX
REV.B

DETAIL A

| | | | | | | | | | | | | | | | |
|---------------------------------------|----------|---|----------|--|----------|--|---|---|---------------------------------------|--|-----------------------------|---|------------|--|---|
| EC NO. DRWN: PDAI CHK: APPR: | 04/06/11 | EC NO. DRWN: METTLE03/03/06 CHK: APPR: | 02/08/01 | EC NO. DRWN: MACKY CHK: APPR: | 02/07/03 | QUALITY SYMBOLS MAJOR ▼ = 0 CRITICAL ▽ = 5 | GENERAL TOLERANCES: (UNLESS SPECIFIED) | | SCALE N.S.T | DESIGN UNITS <input checked="" type="checkbox"/> mm <input type="checkbox"/> INCH | THIRD ANGLE PROJECTION | DIMENSIONS: <input type="checkbox"/> mm <input type="checkbox"/> INCH <input type="checkbox"/> mm ONLY | | SHT | REV |
| | C | | | | | | B1 | B | A | 4 PLACES | 3 PLACES | 2 PLACES | 1 PLACE | DRAWN BY & DATE METTLE 03/03/06 | TITLE: LFH60(M) TO TWO DVI-D(M) CABLE ASS'Y |
| DESCRIPTION | | | | | | ANGULAR: \ | | | APPROVED BY & DATE T.WONG 03/03/06 | MOLEX INCORPORATED | | | | | |
| REV | | | | | | | | | CAD FILENAME S88744BB.S01 | MATERIAL NO. SEE TABLE A | DRAWING NO. SD-88744-028 | SHEET NO. 1 OF 3 | | THIS DRAWING CONTAINS INFORMATION THAT IS PROPRIETARY TO MOLEX INCORPORATED AND SHOULD NOT BE USED WITHOUT WRITTEN PERMISSION. | |
| | | | | | | | | | | | | | SIZE A4 | | |

6

5

4

3

2

1

WIRING DIAGRAM:

| SHIELD | SHIELD | GROUND |
|--------|--------|----------------|
| PIN 24 | PIN 32 | DVI1_TXC- |
| PIN 23 | PIN 31 | DVI1_TXC+ |
| PIN 22 | PIN 57 | DVI1_TXC RTN |
| PIN 19 | PIN 33 | DVI1_TX0 RTN |
| PIN 18 | PIN 29 | DVI1_TX0+ |
| PIN 17 | PIN 30 | DVI1_TX0- |
| PIN 16 | PIN 36 | DVI1_HPD |
| PIN 15 | PIN 54 | SYNCS |
| PIN 14 | PIN 5 | +5V |
| PIN 11 | PIN 34 | DVI1_TX1 RTN |
| PIN 10 | PIN 27 | DVI1_TX1+ |
| PIN 9 | PIN 28 | DVI1_TX1- |
| PIN 7 | PIN 7 | DVI1_SDA |
| PIN 6 | PIN 6 | DVI1_SCL |
| PIN 3 | PIN 35 | DVI1_TX2 RTN |
| PIN 2 | PIN 25 | DVI1_TX2+ |
| PIN 1 | PIN 26 | DVI1_TX2- |
| DVI 1 | LFH60 | CABLE FUNCTION |

| SHIELD | SHIELD | GROUND |
|--------|--------|----------------|
| PIN 24 | PIN 44 | DVI2_TXC- |
| PIN 23 | PIN 45 | DVI2_TXC+ |
| PIN 22 | PIN 49 | DVI2_TXC RTN |
| PIN 19 | PIN 43 | DVI2_TX0 RTN |
| PIN 18 | PIN 16 | DVI2_TX0+ |
| PIN 17 | PIN 17 | DVI2_TX0- |
| PIN 16 | PIN 40 | DVI2_HPD |
| PIN 15 | PIN 52 | SYNCS |
| PIN 14 | PIN 11 | +5V |
| PIN 11 | PIN 42 | DVI2_TX1 RTN |
| PIN 10 | PIN 18 | DVI2_TX1+ |
| PIN 9 | PIN 19 | DVI2_TX1- |
| PIN 7 | PIN 9 | DVI2_SDA |
| PIN 6 | PIN 10 | DVI2_SCL |
| PIN 3 | PIN 41 | DVI2_TX2 RTN |
| PIN 2 | PIN 20 | DVI2_TX2+ |
| PIN 1 | PIN 21 | DVI2_TX2- |
| DVI 2 | LFH60 | CABLE FUNCTION |

| EC NO. | DRWN: PDAI | 04/06/11 | EC NO. | DRWN: METTLE | 03/03/06 | EC NO. | DRWN: MACKY | 02/08/01 | EC NO. | DRWN: MACKY | 02/07/03 | QUALITY SYMBOLS | GENERAL TOLERANCES: (UNLESS SPECIFIED) | SCALE N.S.T | DESIGN UNITS <input checked="" type="checkbox"/> mm <input type="checkbox"/> INCH | THIRD ANGLE PROJECTION | DIMENSIONS: <input checked="" type="checkbox"/> mm <input type="checkbox"/> INCH <input type="checkbox"/> mm ONLY | SHT | REV | | | | | | | | | | | | | | | | | | | | | |
|----------|---------------|----------|--------|---------------|----------|--------|---------------|----------|--------|---------------|----------|---|--|---|--|-----------------------------|---|---------------------|-----|------------|-----|----|---------|-----|----|--|--|--|--|--|--|--|--|--|--|--|--|--|--|--|
| C | CHK: APPR: | | B1 | CHK: APPR: | | B | CHK: APPR: | | A | CHK: APPR: | | MAJOR ▼ = 0 CRITICAL ▽ = 5 | <table border="1"> <tr><td>4 PLACES</td><td>±0.</td><td>±.</td></tr> <tr><td>3 PLACES</td><td>±0.</td><td>±.</td></tr> <tr><td>2 PLACES</td><td>±0.</td><td>±.</td></tr> <tr><td>1 PLACE</td><td>±0.</td><td>±.</td></tr> </table> | 4 PLACES | ±0. | ±. | 3 PLACES | ±0. | ±. | 2 PLACES | ±0. | ±. | 1 PLACE | ±0. | ±. | | | | | | | | | | | | | | | |
| 4 PLACES | ±0. | ±. | | | | | | | | | | | | | | | | | | | | | | | | | | | | | | | | | | | | | | |
| 3 PLACES | ±0. | ±. | | | | | | | | | | | | | | | | | | | | | | | | | | | | | | | | | | | | | | |
| 2 PLACES | ±0. | ±. | | | | | | | | | | | | | | | | | | | | | | | | | | | | | | | | | | | | | | |
| 1 PLACE | ±0. | ±. | | | | | | | | | | | | | | | | | | | | | | | | | | | | | | | | | | | | | | |
| | | | | | | | | | | | | DRAWN BY & DATE METTLE 03/03/06 | | TITLE: LFH60(M) TO TWO DVI-D(M) CABLE ASS'Y | | | | | | | | | | | | | | | | | | | | | | | | | | |
| | | | | | | | | | | | | CHECKED BY & DATE MACKY 03/03/06 | | | | | | | | | | | | | | | | | | | | | | | | | | | | |
| | | | | | | | | | | | | APPROVED BY & DATE T.WONG 03/03/06 | | MOLEX INCORPORATED | | | | | | | | | | | | | | | | | | | | | | | | | | |
| | | | | | | | | | | | | CAD FILENAME S88744BB.S02 | | MATERIAL NO. SEE TABLE A | | DRAWING NO. SD-88744-028 | | SHEET NO. 2 OF 3 | | | | | | | | | | | | | | | | | | | | | | |
| | | | | | | | | | | | | THIS DRAWING CONTAINS INFORMATION THAT IS PROPRIETARY TO MOLEX INCORPORATED AND SHOULD NOT BE USED WITHOUT WRITTEN PERMISSION. | | | | | | | | SIZE A4 | | | | | | | | | | | | | | | | | | | | |

